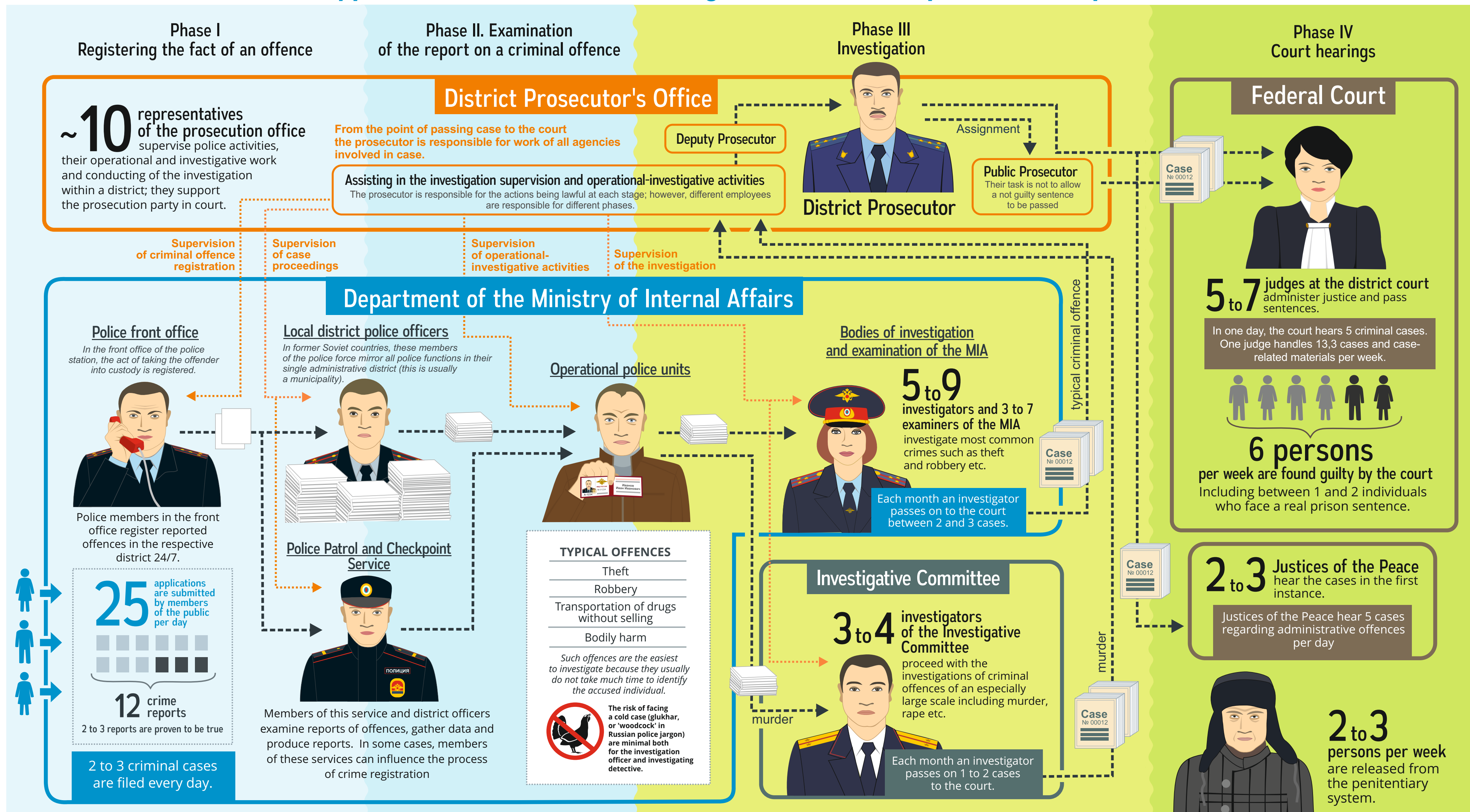


A typical criminal case investigation: involved parties and phases*

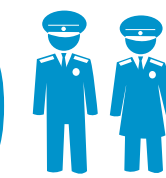


* This is a typical administrative structure of a medium-sized municipal district or a small town in Russia (based on data from December 2013). The situation in Moscow and St. Petersburg or other large cities would be quite different. All figures, including the number of reports, guilty verdicts, individuals released from prison, and members of the police would be 2 to 5 times greater.

55000
a typical population
of a district



250
members of law
enforcement bodies



The «Open Police» web portal is being created in order to monitor the transparency and openness of law enforcement bodies and the police force in particular.

INFORMATIONAL culture

Created by the Autonomous Non-Profit Organization «Information Culture»

ОТКРЫТАЯ ПОЛИЦИЯ

More information on
www.openpolice.ru

eurias

For EURIAS Annual Meetings - IIAS Jerusalem - 12/13th, 2016

ACTIONS
MARIE CURIE